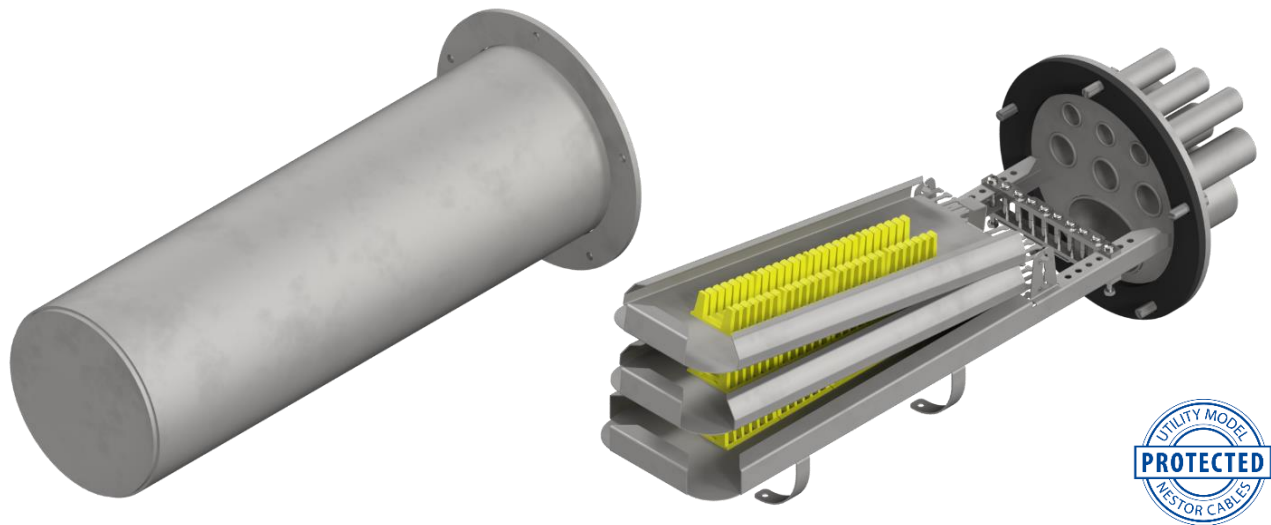


NESTOR STEEL CLOSURE – MEDIUM SIZE

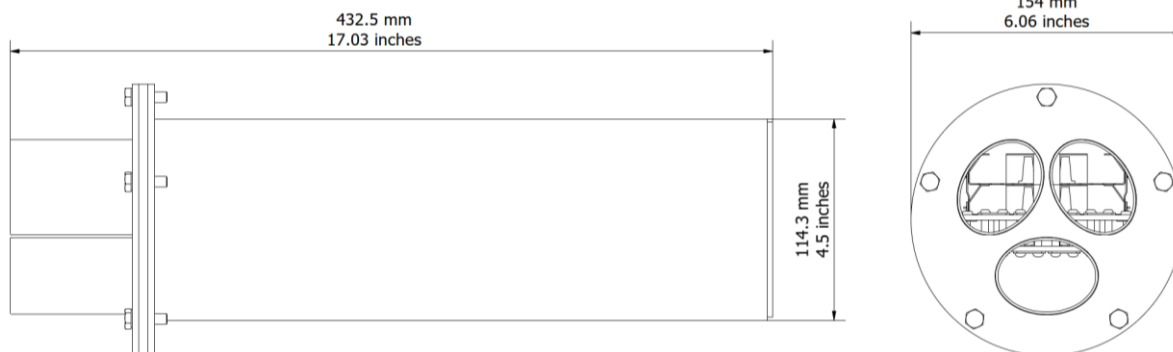


APPLICATION

Suitable for all direct buried, manhole and pole or wall mounted jointing and branching applications.

FEATURES

- Customizable according to your needs up to 288 splice capacity.
 - Fixed splice tray for 96 splice capacity.
 - One extra splice tray for 192 splice capacity.
 - Two extra splice trays for 288 splice capacity.
- Perfect for harsh environments.
 - IP68-rated watertight base and dome with screws and secure sealing system.
 - Robust and bulletproof construction.
 - Made of acid-proof stainless steel.
- Easy-to-access mechanical compression port seals or traditional heat-shrinkable port seals.
 - Wide range of mechanical port seals available up to 23 mm.
 - Heat-shrinkable port seals available up to 25 mm.
- Quick and easy installation.
 - Minimizes time spent on site.
 - Increases the speed of deployment.
- Safe area below splice trays for midspan storage.
- Mounting- and grounding bars for incoming cables.
- Quick and easy installation of extra splice trays.
 - Available for heat-shrinkable splice and ANT crimp splice.

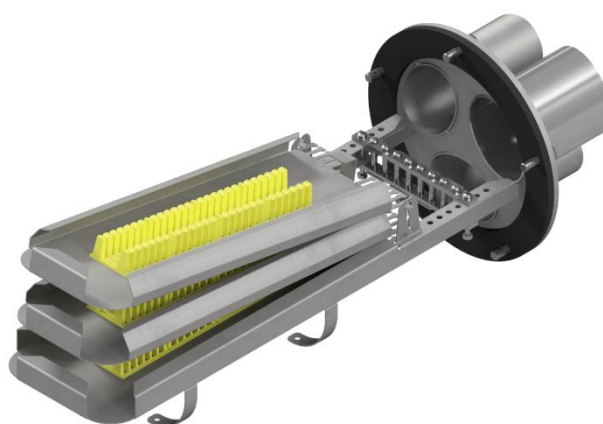


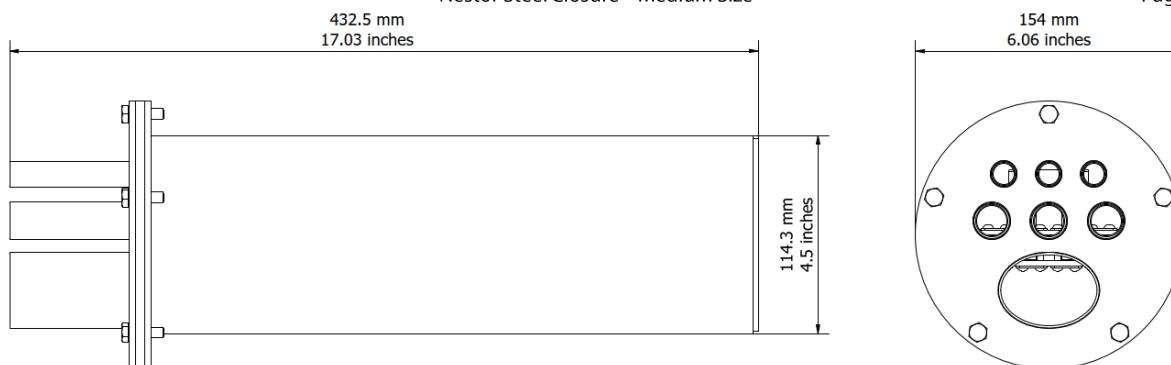
PRODUCT INFORMATION		
Ports	3 pcs	55.6 x 40.9 mm
Cable diameter	5 - 23 mm	
Splice capacity	Up to 288	
Dimensions	432.5 x 154 x 154 mm	17.03 x 6.06 x 6.06 inches
Material	Acid-proof stainless steel	
IP code	IP68	

PRE-CONFIGURED PRODUCT CODES				
Code	Description	Cable port sealing type	Splice capacity	Splice type
LV3633	NSC-M-MCP-96-HS	Mechanical compression	96	Heat-shrinkable
LV3634	NSC-M-MCP-96-ANT	Mechanical compression	96	ANT crimp
LV3635	NSC-M-MCP-192-HS	Mechanical compression	192	Heat-shrinkable
LV3636	NSC-M-MCP-192-ANT	Mechanical compression	192	ANT crimp
LV3637	NSC-M-MCP-288-HS	Mechanical compression	288	Heat-shrinkable
LV3638	NSC-M-MCP-288-ANT	Mechanical compression	288	ANT crimp

MECHANICAL COMPRESSION SEALS				
Code	Description	Min. cable diameter	Max. cable diameter	Midspan access
LV2725	Nestor Mech Seal 6 x 7mm	5.0 mm	7.5 mm	No
LV2543	Nestor Mech Seal 6 x 10mm	7.5 mm	10.5 mm	No
LV2544	Nestor Mech Seal 4 x 15mm	10.5 mm	15.3 mm	Yes
LV2545	Nestor Mech Seal 2 x 18mm	15.3 mm	18.5 mm	Yes
LV2546	Nestor Mech Seal 2 x 23mm	18.5 mm	23.1 mm	Yes

BASIC ASSEMBLY	
Dome closure	1 pc
Heat-shrink plugs for unused ports	2 pcs
Heat-shrink tube 56/16 mm	3 x 200 mm
Branching part for midspan access	3 pcs
Grounding clip for 16 mm ² wire	1 pc
Grounding wire 2,5 mm ²	2 pcs
Corrugated cable clamp	2 pcs
Oetiker hose clamp 7-9 mm	2 pcs
Oetiker hose clamp 8-11 mm	2 pcs
Cable tie 3x100 mm	2 x 12 pcs
Velcro tape loop	390 mm
Cleaning tissue	1 pc
Silica gel 25 g	1 pc
Cardboard box	470 x 305 x 170 mm 18.5 x 12 x 6.7 inches
	1 pc

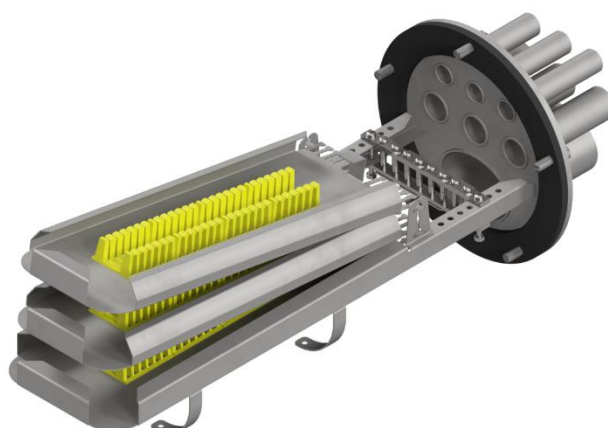




PRODUCT INFORMATION		
Ports	3 pcs	Ø 12 mm
	3 pcs	Ø 17.3 mm
	1 pc	55.6 x 40.9 mm
Cable diameter	6 - 25 mm	
Splice capacity	Up to 288	
Dimensions	432.5 x 154 x 154 mm	17.03 x 6.06 x 6.06 inches
Material	Acid-proof stainless steel	
IP code	IP68	

PRE-CONFIGURED PRODUCT CODES				
Code	Description	Cable port sealing type	Splice capacity	Splice type
LV3627	NSC-M-HSP-96-HS	Heat-shrinkable	96	Heat-shrinkable
LV3628	NSC-M-HSP-96-ANT	Heat-shrinkable	96	ANT crimp
LV3629	NSC-M-HSP-192-HS	Heat-shrinkable	192	Heat-shrinkable
LV3630	NSC-M-HSP-192-ANT	Heat-shrinkable	192	ANT crimp
LV3631	NSC-M-HSP-288-HS	Heat-shrinkable	288	Heat-shrinkable
LV3632	NSC-M-HSP-288-ANT	Heat-shrinkable	288	ANT crimp

BASIC ASSEMBLY		
Dome closure	1 pc	
Heat-shrink plugs for unused ports	7 pcs	
Heat-shrink tube 56/16 mm	1 x 200 mm	
Heat-shrink tube 33/8 mm	3 x 200 mm	
Heat-shrink tube 22/6 mm	3 x 200 mm	
Branching part for midspan access	1 pc	
Grounding clip for 16 mm ² wire	1 pc	
Grounding wire 2,5 mm ²	2 pcs	
Corrugated cable clamp	2 pcs	
Oetiker hose clamp 7-9 mm	2 pcs	
Oetiker hose clamp 8-11 mm	2 pcs	
Cable tie 3x100 mm	2 x 12 pcs	
Velcro tape loop	390 mm	
Cleaning tissue	1 pc	
Silica gel 25 g	1 pc	
Cardboard box	470 x 305 x 170 mm 18.5 x 12 x 6.7 inches	1 pc



CONFIGURED PRODUCTS

NSC - _____ - _____ - _____ - _____

A diagram consisting of four separate, empty rectangular boxes arranged horizontally. Each box contains a single blue number: 1, 2, 3, and 4, from left to right.

1 Select closure size

XS = Extra small

S = Small

M = Medium

L = Large

2 Select cable port sealing type

MCP = Mechanical compression port

HSP = Heat-shrinkable port

3 Select splice capacity

12 = Up to 12 splices

24 = Up to 24 splices

48 = Up to 48 splices

72 = Up to 72 splices

96 = Up to 96 splices

192 = Up to 192 splices

288 = Up to 288 splices

4 Select splice type

HS = Heat-shrinkable splice

ANT = ANT crimp splice

Note: Configurator is for reference only and all options may not be available or compatible with other options listed. Please contact your Nestor Cables representative for assistance in product configurations.